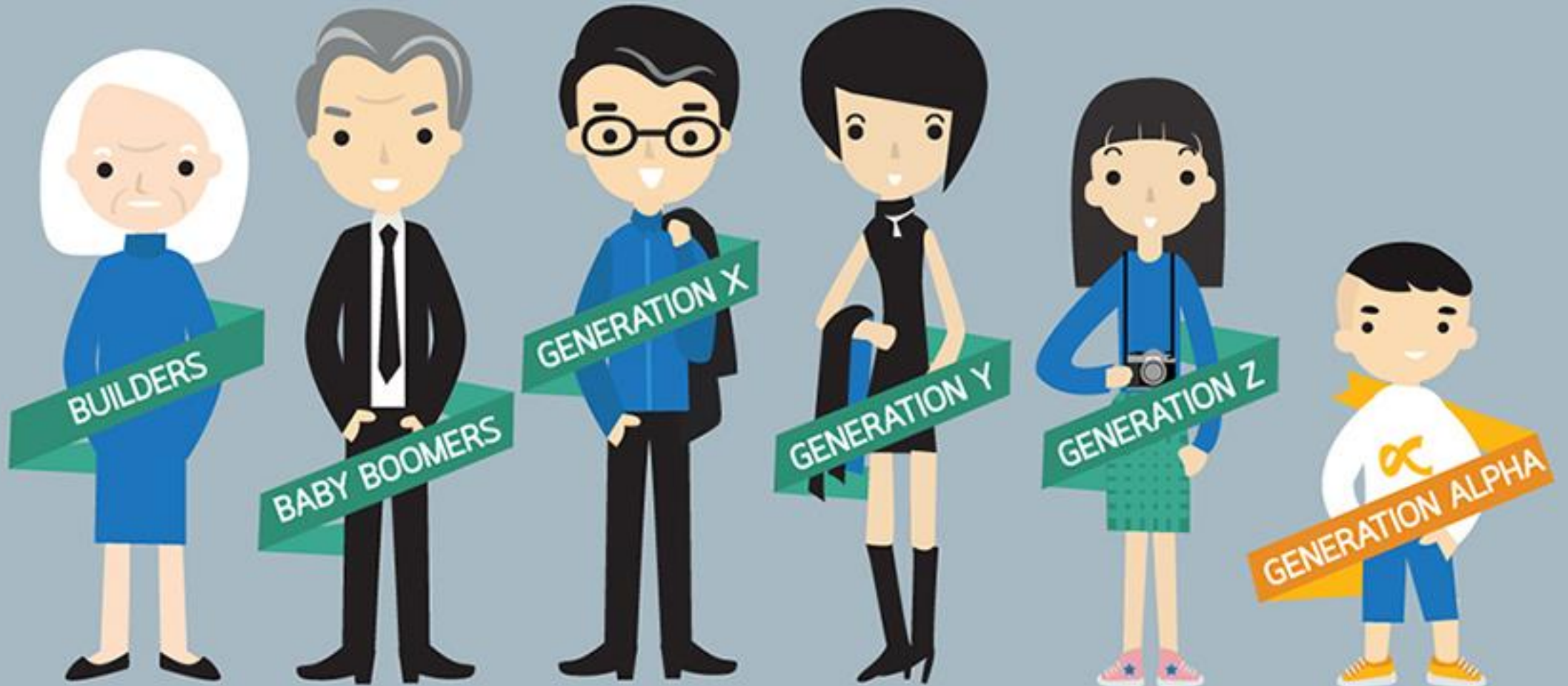


# Five loaves, Two Fish

John 6:1-15; Mark 6:30-44



**The Builders**  
1928-1945

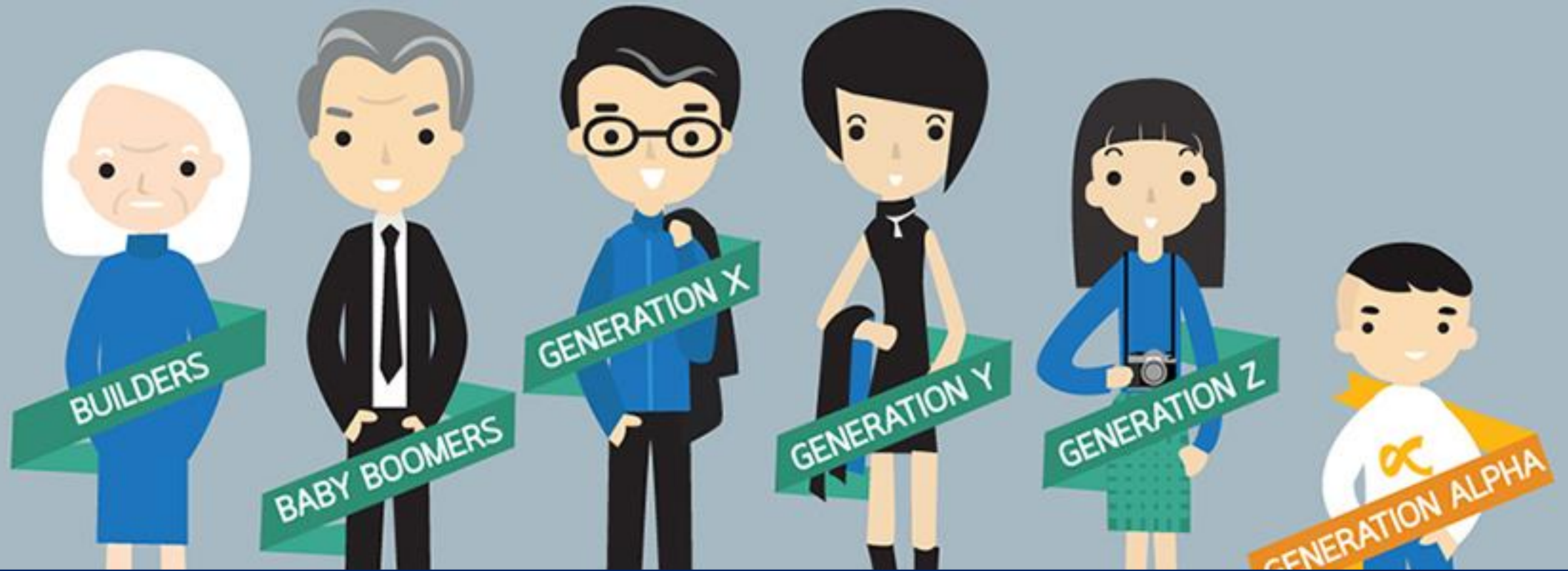
**Baby Boomers**  
1946-1964

**Generation X**  
1965-1980

**Millennials**  
1981-1996

**Generation Z**  
1997-2012

**Generation Alpha**  
2013 - Today

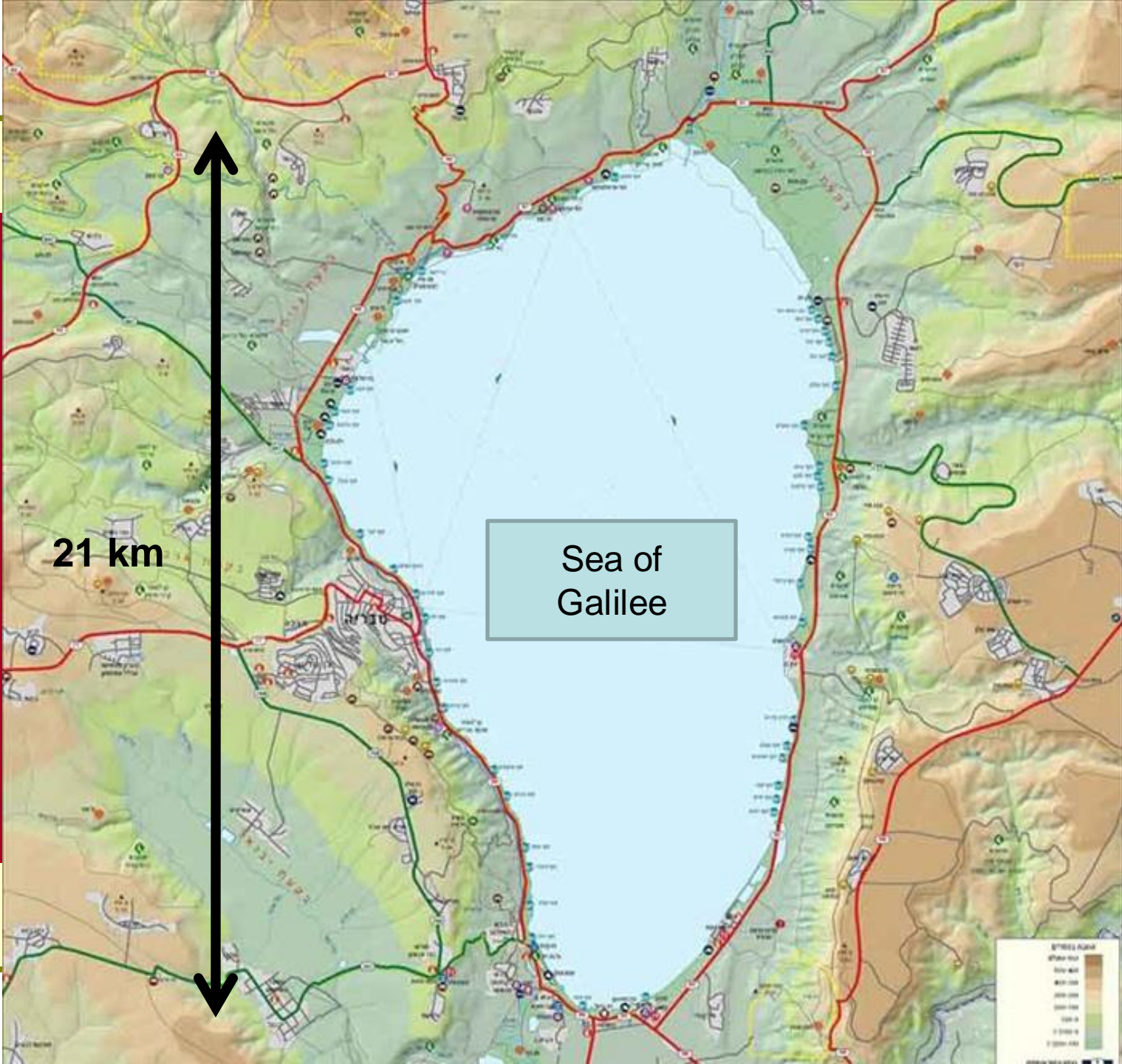


**Each generation not only has a place,  
but each has something to give.**

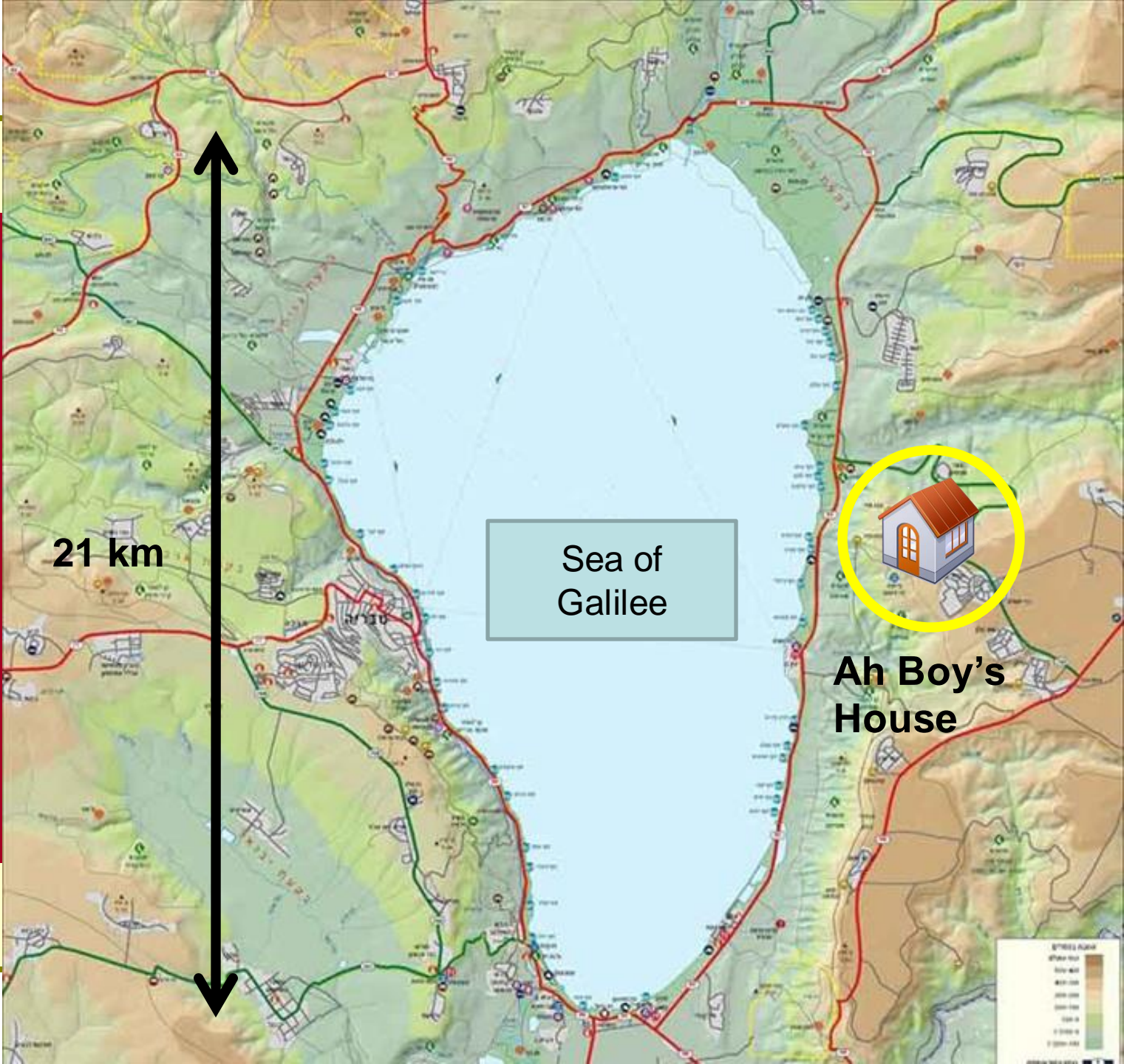












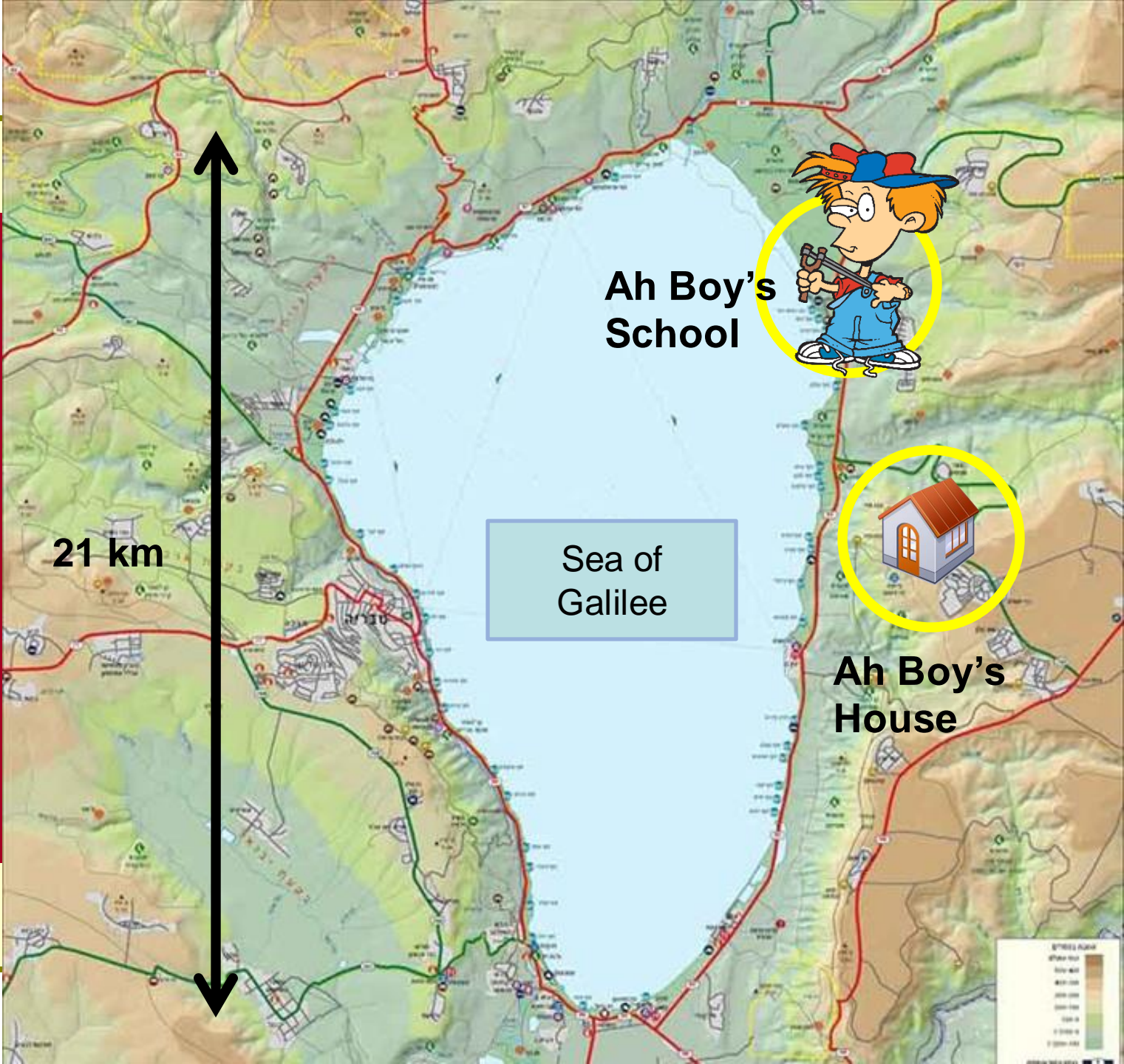
21 km

Sea of Galilee



Ah Boy's House





**Ah Boy's  
School**

Sea of  
Galilee

**Ah Boy's  
House**

**21 km**





Means around  
10,000 men and  
women and  
maybe even  
15,000 if we count  
in the children.

About **five thousand men** were  
there. – Luke 9:14





Jesus, this is a remote place... and it's already very late. **Send the people away** so they can go to the surrounding countryside and villages and buy themselves something to eat. - Mark 6:35-36

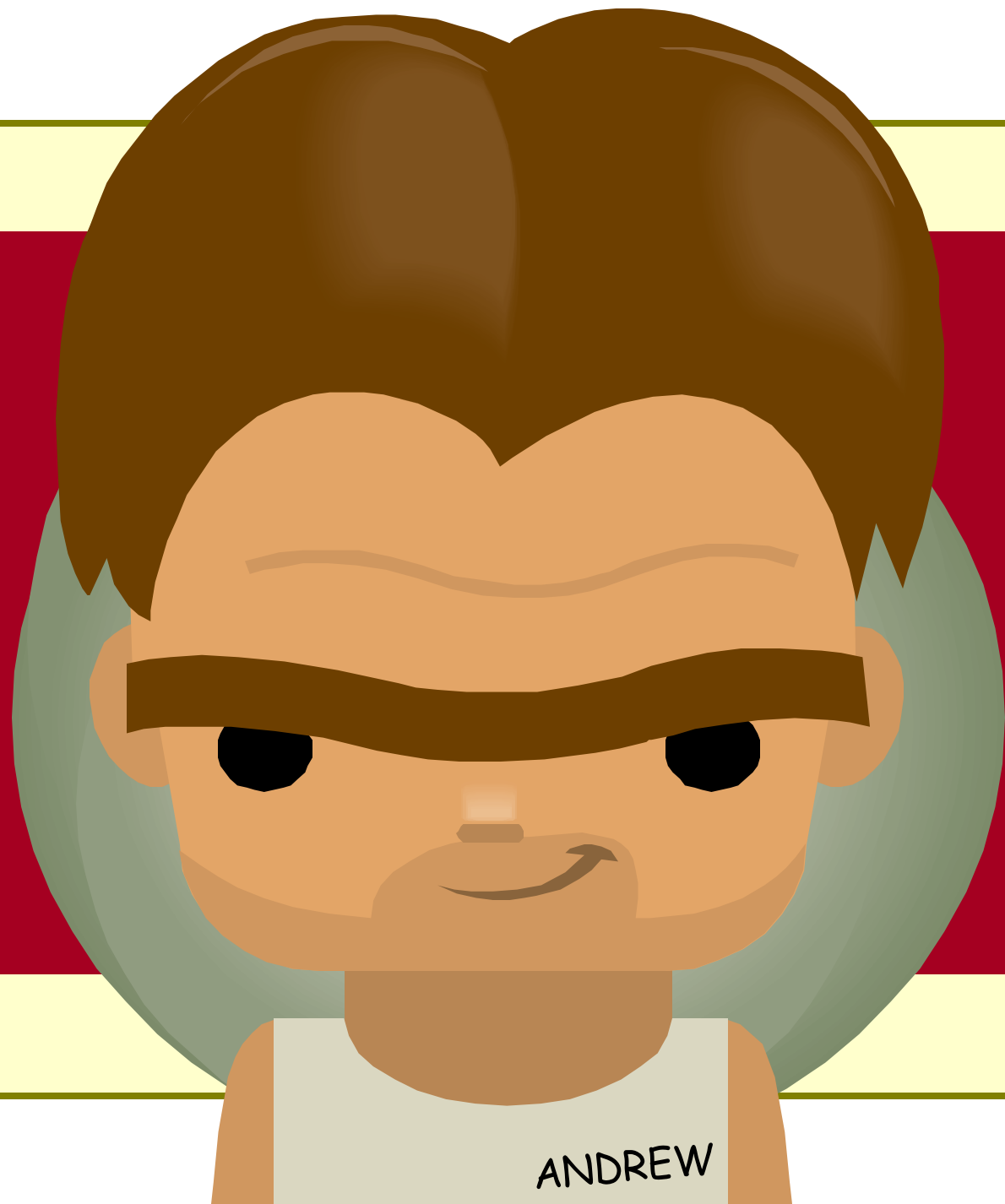
But he answered, 'You give them something to eat.' - Mark 6:37a



That would take eight months of a man's wages! Are we to go and spend that much on bread and give it to them to eat? - Mark 6:37b

“How many loaves do you have?”  
Jesus asked. “Go and see.”  
- Mark 6:38





ANDREW

Here is **a boy** with five small  
barley loaves and two small  
fish, - John 6:9a

...but **what good is that** with  
this huge crowd?”  
– John 6:9b (NLT)

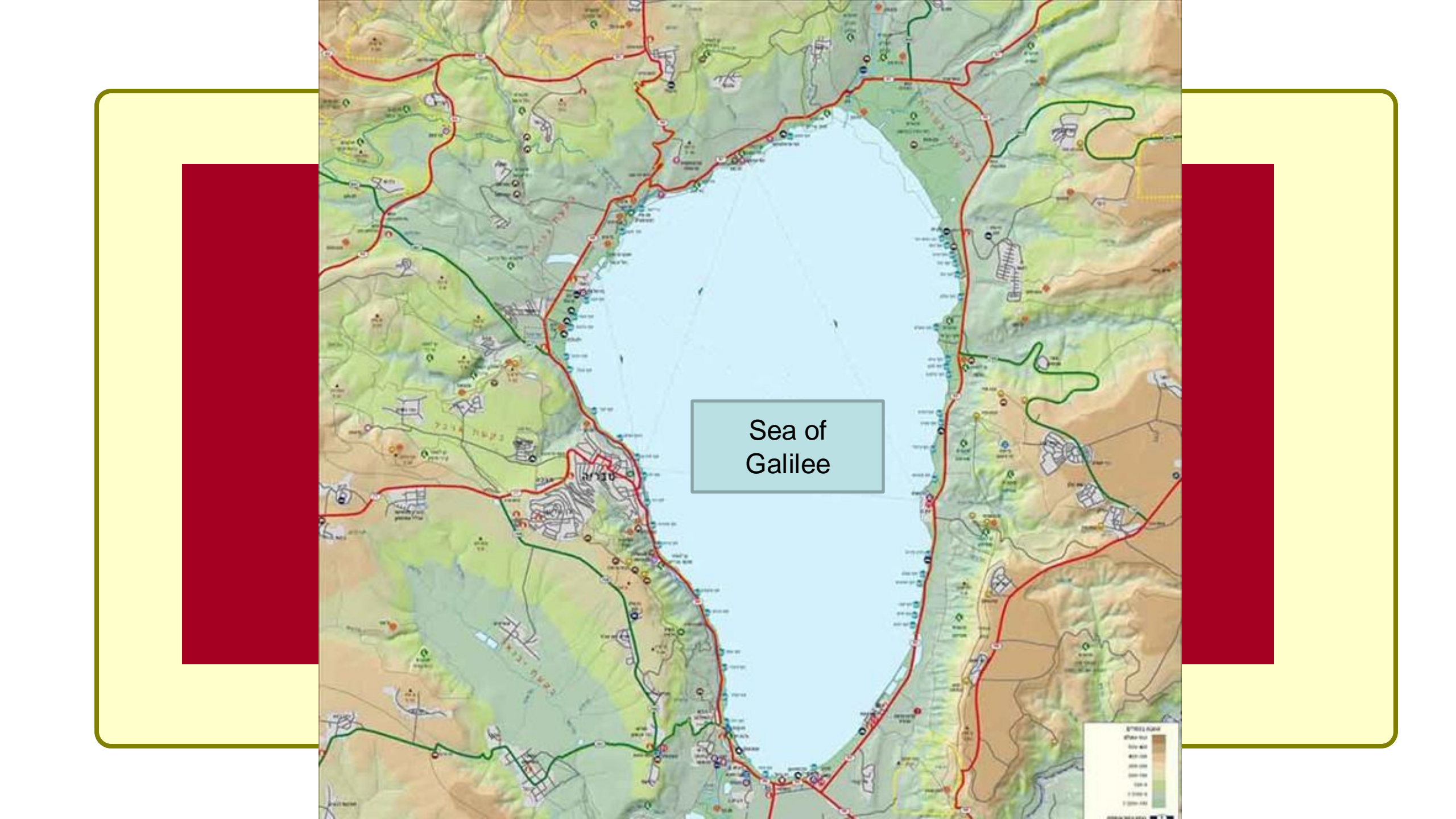
Here is a boy with **five small  
barley loaves** and **two small  
fish**, - John 6:9a



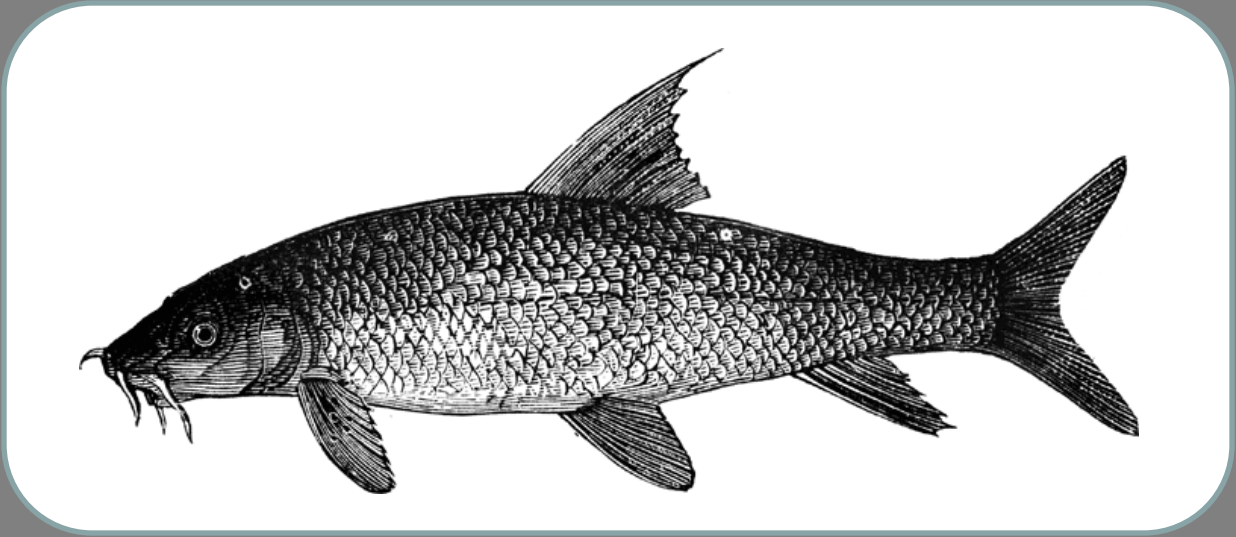


Barley bread was the bread for the poor common people.

Barley is a grain which in  
England is given to horses  
and in Scotland fed to people.  
- Samuel Johnson (1755)

A topographic map of the Sea of Galilee region, showing the lake in the center, surrounded by green and brown terrain. A red line indicates a major road or boundary. A central label 'Sea of Galilee' is in a light blue box. The map is framed by a yellow border with two dark red vertical bars on the left and right sides. A legend in the bottom right corner shows elevation contours and a scale.

Sea of Galilee



Barbel



Tilapia

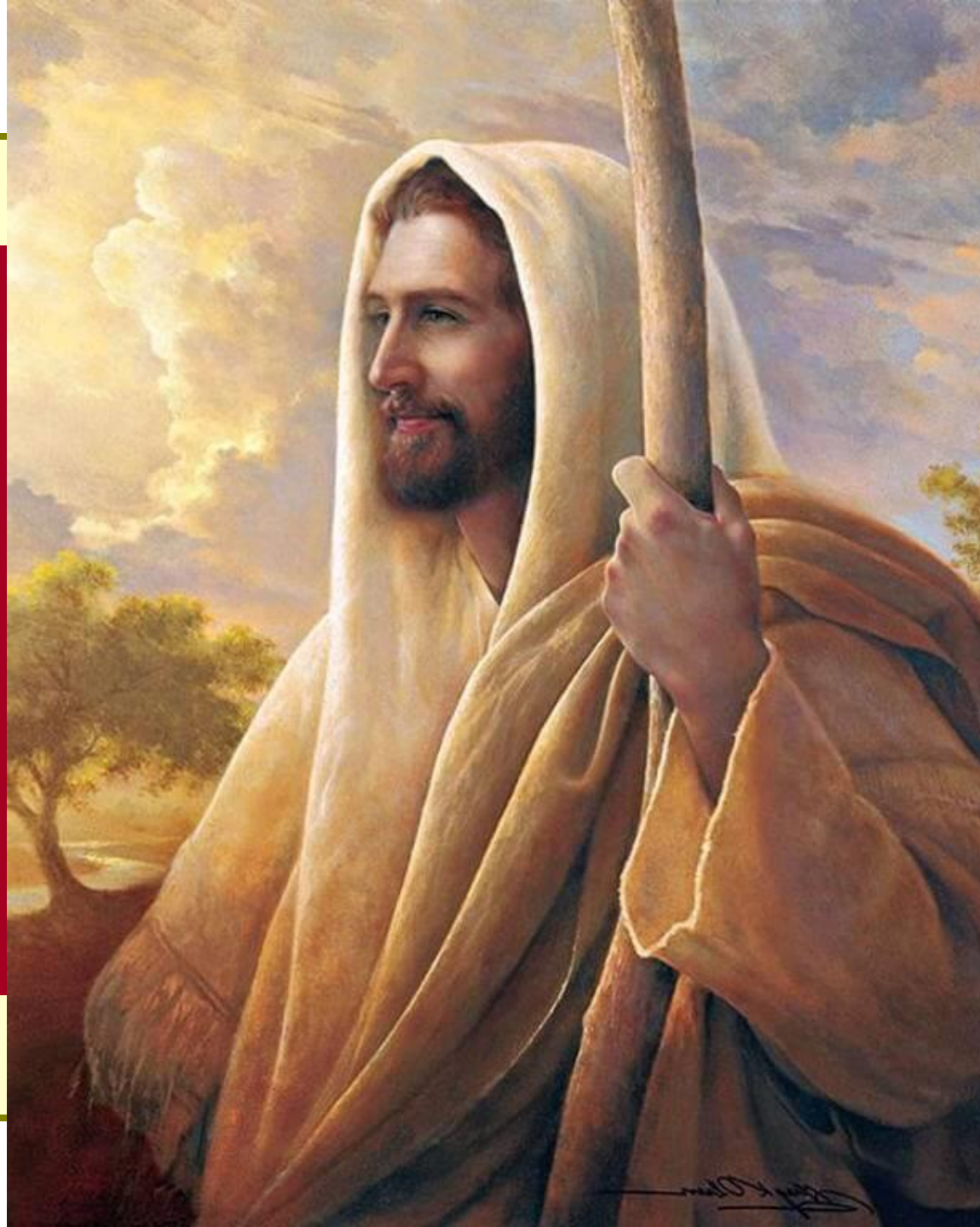


Sardine





What good  
would it do?



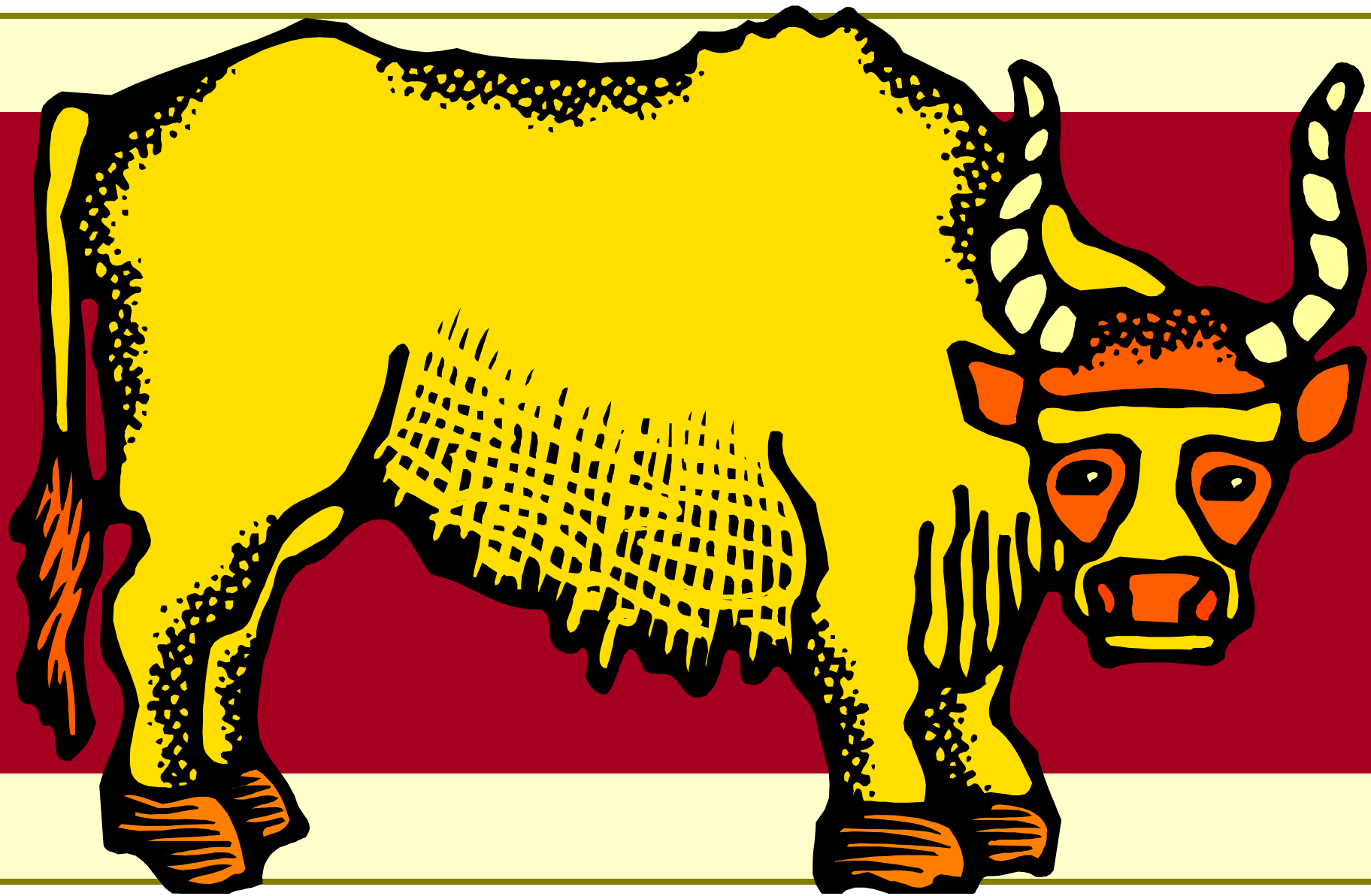


Why did so  
many people  
follow Jesus?

Some time after this, Jesus crossed to the far shore of the Sea of Galilee, and a great crowd of people followed him because they saw the miraculous signs he had performed on the sick.

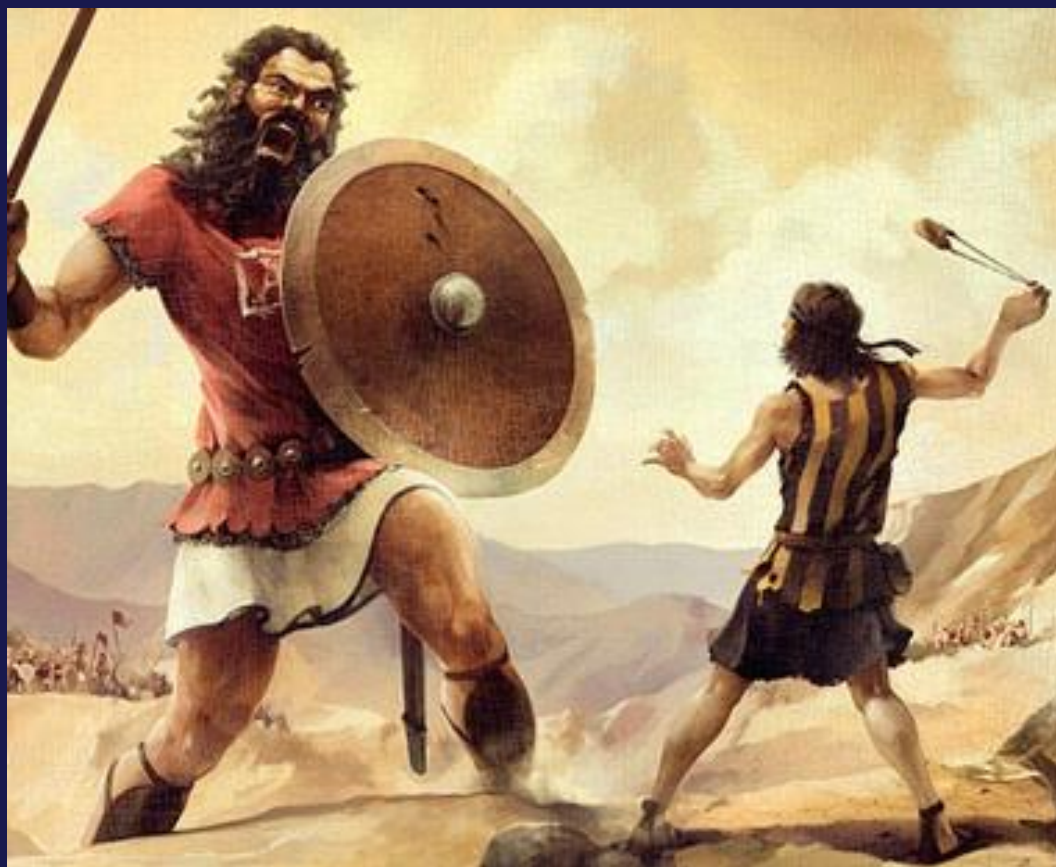
- John 6:1-2







# Gideon's Army of 300



# David and Goliath





# Elijah and the Poor Widow



God's chooses to use  
small things, because  
it brings Him glory.

Only when you are  
powerless, can you be a  
channel of God's power.

And taking the five loaves and the two fish, he looked up to heaven and said a blessing and broke the loaves and gave them to the disciples to set before the people. And he divided the two fish among them all. – Mark 6:41





# Stewardship Month Booths

DATE	MINISTRY
05/06 Aug	BB/GB, Junior Church, Little Seeds, Youth Ministry
12/13 Aug	Befrienders (Pastoral & Activities), Home & Visitation, Intergenerational Engagement, Thursday Healing Service
19/20 Aug	Communications, Crochet Fellowship, Seniors' Fellowship, Women At The Well
26/27 Aug	Alpha, Christian Education, Hospitality, Music & Creative Arts, Men4Men

*Scan to sign up!*



And taking the five loaves and the two fish, he looked up to heaven and said a blessing and broke the loaves and gave them to the disciples to set before the people. And he divided the two fish among them all. – Mark 6:41

